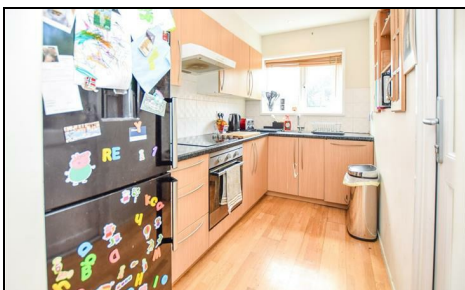


Church Path Mitcham, CR4 3BN

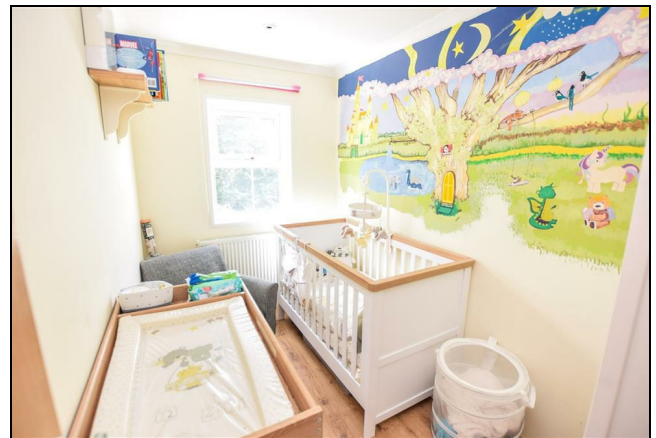
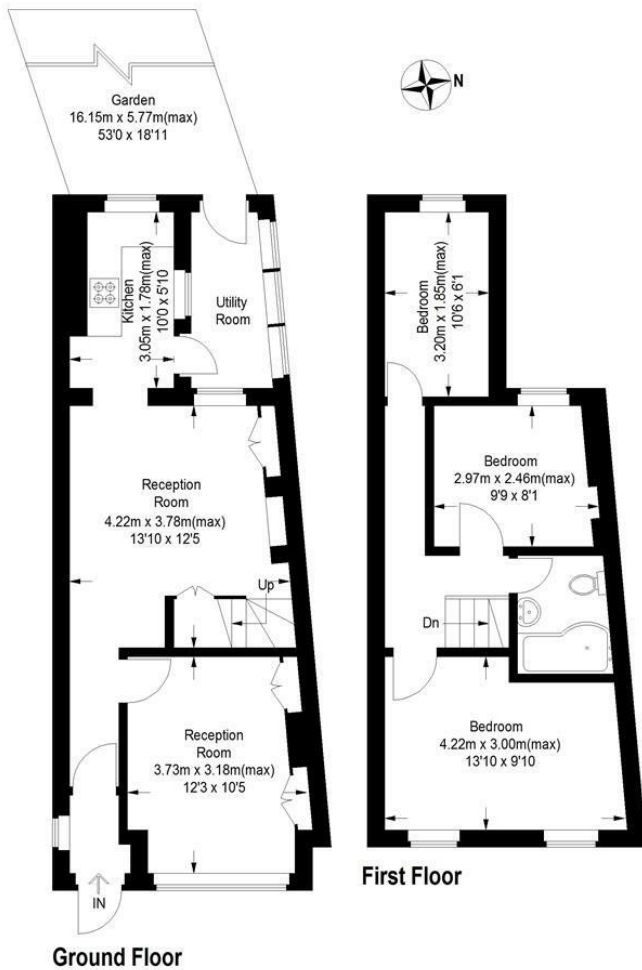
£425,000 Freehold



A well presented three bedroom end of terrace Period cottage located on a quiet road in the Cricket Green Conservation Area close to both Colliers Wood and Mitcham. Comprising of a three bedrooms, separate lounge or dining room, modern bathroom, kitchen with utility room and direct access to the west facing rear garden. This property would be an ideal purchase for a first time buyer looking for a house rather than a flat.

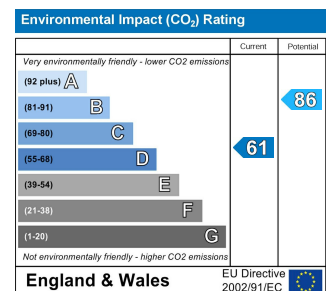
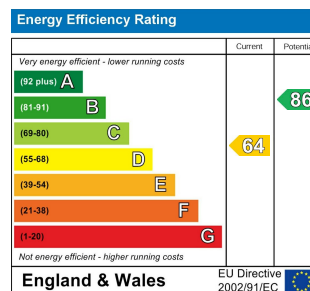
Church Path, CR4

Approximate Gross Internal Area
77.4 sq m / 834 sq ft



This floor plan is for representation purposes only and is not drawn to scale. Whilst every attempt has been made to ensure its accuracy measurements are approximate only and should be checked before making any decisions reliant upon them.
Copyright Bespokeplans.co.uk 2020 (ID63756)

- Period Cottage
- Three Bedrooms
- End Of Terrace
- West Facing Garden
- Two Receptions
- Utility Room



For Free Mortgage Quote and Best Mortgage Rates, call an Ellisons Mortgage Advisor on 020 8544 0518



Although these particulars are believed to be correct, their accuracy is not guaranteed and they do not form part of any contract.

Celebrating 30 years of successful Sales and Lettings in Merton

